

2018

EXPEDITION[®] XTREME

PACKAGE HIGHLIGHTS

- RAS™ 2 front suspension
- REV-XU™ platform
- SC™-5U articulating rear suspension
- Locking mechanism on one side (no tool required) for articulated suspension
- 20 x 154 x 1.75 in. track
- Adjustable ski stance
- RF D.E.S.S.™ key
- Stiff grab handle on handlebar
- Multi-function digital gauge with engine temperature gauge
- Electric start
- Synchromesh transmission with reverse (2-1-N-R)
- Air radiator with fan
- Rack & Hitch



EXPEDITION[®] Xtreme 800R E-TEC[®] shown

ROTAX[®] ENGINE

	800RE-TEC [®]
Engine details	Liquid-cooled, 3-D R.A.V.E.™
Cylinders	2
Displacement	799.5 cc / 48.8 in. ³
Bore	82 mm / 3.2 in.
Stroke	75.7 mm / 3 in.
Maximum engine speed	7,900 RPM
Carburation	Electronic Direct Injection
Recommended fuel type	Premium unleaded
Minimum octane	91
Fuel tank	45 L / 12 US gal
Oil tank capacity	3.7 L / 3.9 qt

POWERTRAIN

Drive clutch type	TRA™ VII
Driven clutch type	QRS
Engagement	3,800 RPM
Small sprocket number of teeth	1st gear = 3.23:1 ratio
Large sprocket number of teeth	2nd gear = 1.98:1 ratio
Drive sprocket number of teeth	8
Drive sprocket diameter	183 mm / 7.2 in.
Brake system	Brembo racing brake with stainless-steel braided brake line

DRY WEIGHT

284 kg / 625 lb

FEATURES

Frame	REV-XU™	Starter	Electric	Mirrors	Optional
Skis	Pilot™ DS 2	Reverse	Mechanical	Windshield	580 mm / 23 in.
Seating	1-up modular	Heated throttle lever	Standard	Runner	Square 5/16
Handlebar	Aluminum, tapered with J-hooks / Grab handle	Heated grips	Standard	Carbide configuration	102 mm / 4 in. at 90°
Riser block height	205 mm / 8 in.	Gauge	Multifunction	Hitch	Tongue Type

COLOR

Black 

DIMENSIONS

Vehicle overall length	3,230 mm / 127 in.
Vehicle overall width	1,150 or 1,192 mm / 45.3 or 46.9 in.
Vehicle overall height	1,220 mm / 48 in.
Ski stance	975 mm or 1,018 mm / 38.4 or 40.1 in.
Ski overall length	1,040 mm / 41 in.
Track nominal width	500 mm / 20 in.
Track nominal length	3,923 mm / 154 in.
Track profile height	44.4 mm / 1.75 in.

SUSPENSION

Front suspension	RAS™ 2
Front shock	HPG™ Plus R
Front suspension max. travel	210 mm / 8.3 in.
Rear suspension	SC™-5U
Center shock	HPG™ Plus
Rear shock	KYB [®] Pro 36 EA
Rear suspension max. travel	239 mm / 9.4 in.

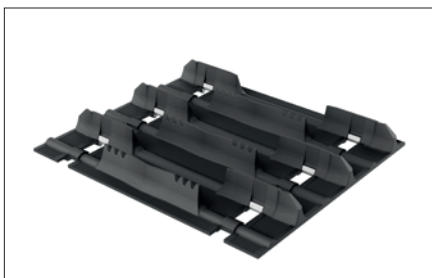


EXPEDITION® Xtreme 800R E-TEC® shown



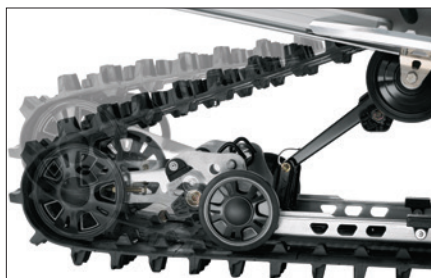
EXPEDITION® Xtreme 800R E-TEC® shown

FEATURE HIGHLIGHTS



20 x 154 x 1.75 in. track

Incredible flotation and pulling capability with 1.75 in. (4.4 cm) lugs.



SC™-5U articulating rear suspension

Features settings that maximize deep snow traction in reverse or lock out for towing.



Synchromesh transmission with reverse (2-1-N-R)

Take off from a stop smoothly, even with a heavy load, thanks to two forward and one reverse gears. Inline 2-1-N-R pattern on right side and can be safely shifted while on the fly.



RAS™ 2 Front suspension

A taller ski spindle, refined geometry and lighter components sharpen the sled's already precise handling, especially in extreme conditions.



Multifunction gauge with LCD screen

GAUGE FEATURES

Speedometer	Standard
Tachometer	Standard
Fuel	Standard
Engine temperature	Standard