

2018

RENEGADE[®] BACKCOUNTRY[™]

850 E-TEC[®]

NEW

RENEGADE[®] BACKCOUNTRY[™] 850 E-TEC[®] shown

PACKAGE HIGHLIGHTS

- REV[™] Gen4 platform
- pDrive[™] clutch with clickers
- cMotion[™] rear suspension
- RAS[™] 3 front suspension
- 15 x 146 in. x 1.6 Cobra track
- Brembo racing brake with braided stainless-steel brake line
- RER[™] electronic reverse
- Adjustable ski stance
- RF D.E.S.S.[™] key
- Standard electric start
- Performance trail seat
- Warm glove box with 4 L / 1 US gal of storage
- Open toe-hold

ROTAX[®] ENGINE

850E-TEC[®]

| Engine details | Liquid-cooled, electronic R.A.V.E. [™] |
|-----------------------|---|
| Cylinders | 2 |
| Displacement | 849 cc / 51.9 in. ³ |
| Bore | 82 mm / 3.2 in. |
| Stroke | 80.4 mm / 3.2 in. |
| Maximum engine speed | 7,900 RPM |
| Carburation | Electronic Direct Injection with additional booster injectors |
| Recommended fuel type | Premium unleaded |
| Minimum octane | 91 |
| Fuel tank | 36 L / 9.5 US gal |
| Oil tank capacity | 3.4 L / 3.6 qt |

POWERTRAIN

| Drive clutch type | pDrive [™] |
|--------------------------------|---|
| Driven clutch type | QRS |
| Engagement | 3,600 RPM |
| Small sprocket number of teeth | 21 |
| Large sprocket number of teeth | 45 |
| Drive sprocket number of teeth | 8 |
| Drive sprocket diameter | 183 mm / 7.2 in. |
| Brake system | Brembo racing brake with stainless-steel braided brake line |

DRY WEIGHT

217 kg / 478 lb

COLOR

White / Black Black

DIMENSIONS

| | |
|------------------------|--------------------------------------|
| Vehicle overall length | 3,275 mm / 129 in. |
| Vehicle overall width | 1,140 to 1,180 mm / 44.9 to 46.5 in. |
| Vehicle overall height | 1,359 mm / 53.5 in. |
| Ski stance | 975 or 1,020 mm / 38.4 or 40.2 in. |
| Ski overall length | 1,040 mm / 41 in. |
| Track nominal width | 381 mm / 15 in. |
| Track nominal length | 3,705 mm / 146 in. |
| Track profile height | 40.6 mm / 1.6 in. Cobra |

SUSPENSION

| | |
|------------------------------|-----------------------|
| Front suspension | RAS [™] 3 |
| Front shock | HPG [™] Plus |
| Front suspension max. travel | 220 mm / 8.7 in. |
| Rear suspension | cMotion [™] |
| Center shock | HPG [™] |
| Rear shock | HPG [™] |
| Rear suspension max. travel | 239 mm / 9.4 in. |

FEATURES

| | | | | | |
|--------------------|-------------------------------------|-----------------------|---------------------|-----------------------|-----------------------|
| Frame | REV [®] Gen4 | Starter | Electric | Mirrors | Optional |
| Skis | Pilot [™] DS 2 | Reverse | RER [™] | Windshield | 430 mm / 17 in. |
| Seating | Trail performance | Heated throttle lever | Standard | Runner | Square 5/16 |
| Handlebar | Aluminum with J-hooks / Grab handle | Heated grips | Standard | Carbide configuration | 102 mm / 4 in. at 90° |
| Riser block height | 120 mm / 4.7 in. | Gauge | Analog with display | Hitch | Optional |



RENEGADE® BACKCOUNTRY™ 850 E-TEC® shown



RENEGADE® BACKCOUNTRY™ 850 E-TEC® shown

FEATURE HIGHLIGHTS



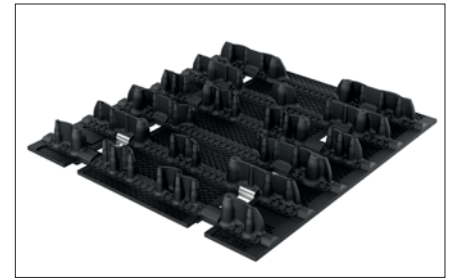
cMotion™ rear suspension

Crossover-specific suspension uses best principles of the rMotion™ trail and tMotion™ mountain skids for confident cornering and agile boondocking.



Rotax® 850 E-TEC® engine

Next generation of the most advanced direct-injection two-stroke engine technology. Designed for reliability and durability with proven 4-stroke and diesel technologies.



Cobra 15 x 146 x 1.6 in. track

This track features combination of flexible cupped lugs for superior off-trail performance and more rigid lugs for added traction on hard-packed snow.



pDrive™ clutch

Fast and friction-free dual rollers transfer torque in place of traditional sliding buttons on this 100% new clutch. Ultra-responsive shifting, impressive RPM consistency and lightweight.



Analog gauge with display

GAUGE FEATURES

| | |
|--------------------|----------|
| Speedometer | Standard |
| Tachometer | Standard |
| Fuel | Standard |
| Engine temperature | Optional |